

# CHILDCARE

**3C'S** 1-800-809-7076

<https://benefind.ky.gov/>

## **BEAR CARE**

206 REASOR AVE.

CONTACT: ALLYSON BERRY

TAYLORSVILLE, KY 40071

502-5437081 OR 502-543-9345

Provides subsidized childcare for children under age 13. Families must meet income guidelines.

## **TRAINING WHEELS CHILDCARE**

18 ELK PARK DRIVE,

CONTACT: ALLYSON BERRY

TAYLORSVILLE. KY 40071

502-477-9100

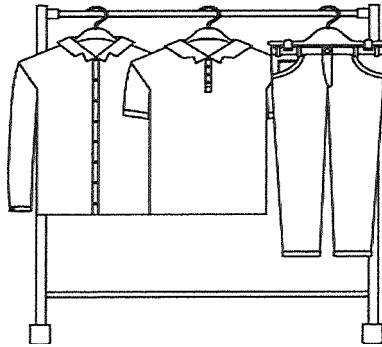
## **TREEHOUSE LEARN AND PLAY CENTER**

70 RAY ROAD

TAYLORSVILLE, KY 40071

502-477-5480

## CLOTHING



### LOVE MY NEIGHBOR

408 GARRARD STREET

TAYLORSVILLE, KY 40071

502-902-1830

**HOURS:** MONDAY 11:00-1:00

TUESDAY CLOSED

WEDNESDAY 11:00-2:00

THURSDAY 12:00-2:00

FRIDAY 10:00-12:00

SATURDAY 9:00-12:00

SUNDAY CLOSED

CONTACT: NICOLE JOLLY 502-299-6713

GRACE COX 502-345-3468

CHAD GOODLETT

JASON COX

### DRESS FOR SUCCESS LOUISVILLE

913 EAST **MAIN** STREET, STE. 101B

LOUISVILLE, KY 40206

502-584-8050

[www.dressforsuccess.org](http://www.dressforsuccess.org)

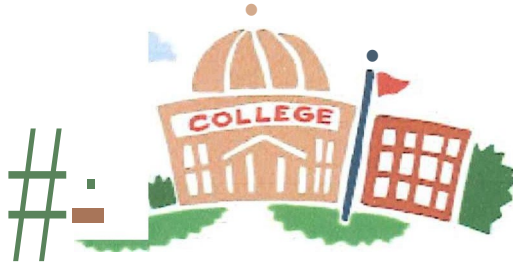
### GOODWILL INDUSTRIES

/ouchers for clothing and household items, when available.

CALL MULTI-PURPOSE COMMUN ITV ACTION AGENCY

502-477-8296

# EDUCATION



## **BEAR CARE PRESCHOOL**

206 REASOR AVE.

TAYLORSVILLE, KY

40071

502-808-6121

CONTACT: ALLYSON BERRY

## **HEADSTART**

-206 REASOR AVE.

TAYLORSVILLE, KY

40071

502-808-6136

CONTACT: OLIVIA SIPES

## **HILLVIEW ACADEMY**

404 MAIN CROSS STREET

TAYLORSVILLE, KY

40071

502-477-1530

CONTACT: BOB HAFENDORFER

PRINCIPAL

## **SPENCER COUNTY BOARD OF EDUCATION**

110 REASOR AVE.

TAYLORSVILLE, KY

-1-0071

502-477-3250

**SPENCER COUNTY ELEMENTARY SCHOOL**

1265 MT. WASHINGTON ROAD

TAYLORSVILLE, KY

40071

OFFICE: 502-477-6950    CAFETERIA: 502-477-6954

PRESCHOOL-FIFTH GRADE

**FAMILY RESOURCE CENTER:** 502-477-3202

CONTACT: LINDSAY, CAIN

Assists school age children and their families in meeting some of their basic needs. Services include linking families to agencies, home visits to families of newborns with information and support of education, parenting and health services.

**SPENCER COUNTY HIGH SCHOOL**

520 TAYLORSVILLE ROAD

TAYLORSVILLE, KY 40071

OFFICE: 502-477-3255    CAFETERIA: 502-477-3272

**YOUTH SERVICE CENTER:** 502-477-3222

CONTACT: VONDA MARTIN

Assists school age children and their families in meeting some of their basic needs. Some services include drug and alcohol abuse counseling, mental health counseling, coordination of community services, employment counseling and training and placement.

**SPENCER COUNTY MIDDLE SCHOOL**

1264 MT. WASHINGTON ROAD

TAYLORSVILLE, KY 40071

OFFICE: 502-477-3260    CAFETERIA: 502-477-3263

**YOUTH SERVICE CENTER** 502-477-6934 EXT. 2005

CONTACT: STEPHANIE SIMPSON

**SPENCER COUNTY PRE SCHOOL**

110 REASOR AVE.

CONTACT: BOB COOTS

TAYLORSVILLE, KY 40071

502-477-3210

**TAYLORSVILLE ELEMENTARY SCHOOL**

420 HIGHVIEW DRIVE

TAYLORSVILLE, KY 40071

502-477-3339

PRE-SCHOOL-FIFTH GRADE

**FAMILY RESOURCE CENTER: 502-477-0199**

**CONTACT: LINDSAY CAIN**

Assists school age children and their families in meeting some of their basic needs. Services include linking families to agencies, home visits to families of newborns with information and support of education, parenting and health services.

**COMMUNITY ACTION NETWORK**

Saylor Aylmer, Drug Free Communities Director

[Saylor.aylmer@spencer.kyschools.us](mailto:Saylor.aylmer@spencer.kyschools.us)

502-477-3255

# EMERGENCY SERVICES

## **AMERICAN RED CROSS**

200 SALTWELL COURT

SHEPHERDSVILLE, KY 40165

502-955-6529

HOURS: 8:00-5:00 MONDAY-FRIDAY

Provides emergency assistance to disaster victims.

## **MULTI-PURPOSE COMMUNITY ACTION AGENCY**

44 CREEKSIDE DRIVE/ P.O. BOX 502

CONTACT: CONNIE CURTSINGER

TAYLORSVILLE, KY 40071

502-477-8296

HOURS: closed Mondays Tuesday-Friday open 9:00-2:30

## **OPERATION CARE**

708 MAIN STREET

CONTACT:

SHELBYVILLE, KY 40065

502-633-1965

May assist with some disaster relief and food. They also operate a women's shelter and a thrift store.

## **SALVATION ARMY**

708 MAIN STREET

SHELBYVILLE, KY 40065

May assist with utilities and some lodging.

## **EMPLOYMENT**

### **CROWN STAFFING**

17 VILLAGE PLAZA #108

SHELBYVILLE, KY 40065

502-257-8870

CLOSES AT 5:00

### **KENTUCKY CAREER CENTER**

SPENCER COUNTY LIBRARY

CONTACT: SUNNY ENIS

EVERY THURSDAY HOURS: 10:00-2:00

502-468-5809

### **MALONE STAFFING**

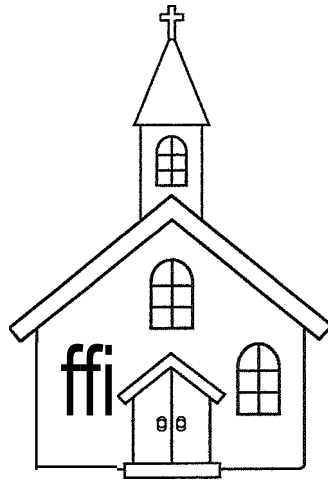
203 ALPINE DRIVE

SHELBYVILLE, KY 4065

502-647-3755

E-MAIL [shelbyville@malonesolutions.com](mailto:shelbyville@malonesolutions.com)

## FAITH BASED ORGANIZATIONS



### **ELK CREEK BAPTIST CHURCH**

5734 ELK GREEK TAYLORSVILLE, KY 40071

502-477-2730

502-210-9872

CONTACT: LISA HUGHES

May provide assistance with personal and household items.

### **FIRST BAPTIST CHURCH**

115 W. MAIN STREET

CONTACT: DONNA DADISMAN

TAYKORSVILLE, KY

502-477-8197

Call to inquire about possible types of assistance.

### **GRACE CHAPEL COGOP**

60 RAY ROAD

TAYLORSVILLE, KY 40071

502-991-2053 Pastor Robbie Delph

502-639-1737 Jill Whitehouse

May provide some financial assistance.

### **TAYLORSVILLE COMMUNITY CHURCH (TCC)**

277 TAYLORSVILLE ROAD

CONTACT: CHAD GOODLETT

TAYLORSVILLE, KY 40071



502-477-2985

May provide some financial assistance.

### **REDEMPTION HILL BAPTIST CHURCH**

9614 TAYLORSVILLE ROAD

CONTACT: Rhonda Cox

FISHERVILLE, KY 40023

502-477-2222

They offer a drug and alcohol abuse program called "CELEBRATE RECOVERY". It meets on Mondays at 6:00pm.

[info@redemptionhillbc.org](mailto:info@redemptionhillbc.org)

### **SPENCER CHRISTIAN CHURCH**

5720 TAYLORSVILLE ROAD

CONTACT: MIKE SIMPSON

FISHERVILLE, KY 40071

502-477-9617 EXT. 109

Call to inquire about possible types of assistance.

### **SPENCER COUNTY MINISTERIAL ASSOCIATION**

PASTOR JOHN ROHR PLUM CREEK BAPTIST CHURCH

31 PLUM CREEK ROAD

TAYLORSVILLE, KY 40071

502-477-2582

Benevolence fund for emergency relief purposes.

### **TAYLORSVILLE COMMUNITY CHURCH**

277 TAYLORSVILLE ROAD

CONTACT: CHAD GOODLETT

TAYLORSVILLE, KY 40071

502-477-2985

May provide some financial assistance.

## FOOD BANKS



### **FIRST BAPTIST CHURCH**

115 WEST MAIN STREET

TAYLORSVILLE, KY 40071

502-477-8197

CONTACT: BOB GILBERT

### **FOOD DISTRIBUTION DAY**

LAST THURSDAY OF EACH MONTH

3:00 PM UNTIL FOOD RUNS OUT

### **MULTI-PURPOSE COMMUNITY ACTION AGENCY**

44 CREEKSIDE DRIVE

TAYLORSVILLE, KY 40071

502-477-8296-

CONTACT: CONNIE CURTSINGER

SENIOR COMMODITIES-Thursday of every month

9:15-4:00

EMERGENCY FOOD BOXES Once a month.

TEFAP-2nd Tuesday of every month 9:15-??

PRTODUCE EVERY FRODAY MORNING 9:15-??

## **HEALTH CARE**

### **CARETENDERS**

197 ALPINE DRIVE  
SHELBYVILLE, KY 40065  
502-647-0450  
866-274-7025  
FAX: 502-647-9666

CONTACT: MELISSA STEVENS

### **DEPARTMENT FOR COMMUNITY BASED SERVICES**

73 EAST MAIN STREET  
TAYLORSVILLE, KY 40071  
1-855-306-8959

HOURS: 8:00-4:30 MONDAY-FRIDAY

Provides Medicaid/Passport health coverage for low income families.

### **PARK DUVALL AT SPENCER COUNTY-TAYLORSVILLE COMMUNITY HEALTH CENTER**

510 TAYLORSVILLE ROAD  
TAYLORSVILLE, KY 40071  
502-477-2248

HOURS: 8:00-5:00 MONDAY, WEDNESDAY, THURSDAY, FRIDAY  
10:00-7:00 TUESDAY

Provides health care for all ages, based on income.

### **SEVEN COUNTIES**

CONTACT: MOSEZELLA JONES, MRC

47 WEST MAIN STREET  
TAYLORSVILLE, KY 40071  
502-435-7424

Provides assistance with mental health needs for adults and children.

**SIGNATURE HEALTH CARE AND REHABILITATION CENTER**

J25 TAYLORSVILLE ROAD

TAYLORSVILLE, KY 40071

502-477-8838

Nursing home facility.

**SPENCER COUNTY HEALTH DEPARTMENT**

88 SPEARS DRIVE

TAYLORSVILLE, KY 40071

502-477-8146

HOURS: MONDAY-WEDNESDAY AND FRIDAY 8:00-4:30 THURSDAY 8:00-5:30

**NORTH CENTRAL DISTRICT HEALTH DEPARTMENT**

Covering Spencer, Shelby, Henry, and Trimble Counties

Website: [NCDHD.com](http://NCDHD.com)

Facebook: [@NCdistrictHD](https://www.facebook.com/NCdistrictHD)

502-633-1243

Contact: Ben Kennedy, Community Health Supervisor

Contact: Starlene Stucker, HANDS Supervisor

**UNIVERSITY OF LOUISVILLE SCHOOL OF DENTISTRY**

501 PRESTON STREET

LOUISVILLE, KY 40292

502-852-5096

By appointment only.

## **HOUSING**

### **CHAPEL HOUSE/FRIENDSHIP HOUSE APARTMENTS**

40 RAY RD.

CONTACT: KARLA PORTER

TAYLORSVILLE, KY 40071

502-477-9398

Income based housing for persons 62years of age or older.

### **HABITAT FOR HUMANITY SPENCER COUNTY**

P.O. BOX 999

CONTACT: BECKY CULVER

TAYLORSVILLE, KY 40071

502-477-2263

### **HALLMARK AT THE LAKE**

142 RAY DRIVE

CONTACT: LINDA NORTON

TAYLORSVILLE, KY 40071

502-354-0267 CLOSSES AT 4:30

### **KENTUCKY HOUSING CORPORATION**

1231 LOUISVILLE ROAD

FRANKFORT, KY 40601

1-800-633-8896

502-564-7360

RENTAL OFFICE 1-877-552-7368

### **TAYLORSVILLE PLACE APARTMENTS**

APT 1 MOBILE DRIVR

{AYLORSVILLE, KY 40071

502-534-9100 FAX

502-354-9500

**WINTERWOOD, INC**

.52 ALLEN DRIVE

SHELBYVILLE, KY 40065

502-633-3742 OR 1-800-227-4388

HOURS: 8:30-5:00 M-F

Provides low income housing assistance with one, two and three bedroom apts. as they become available.

**SPENCERVILLAGE-1,2 &3 bedrooms**

**CENTERTOWNE - 1 &2 bedrooms**

**TAYLORSVILLE TOWN HOMES 1 bedrooms**

# **INCOME MANAGEMENT/SUBSIDY PROGRAMS**

## **DEPARTMENT FOR COMMUNITY BASED SERVICES**

73 EAST MAIN STREET

TAYLORSVILLE, KY 40071

1-855-306-8959

HOURS: 8:00-4:30 MONDAY-FRIDAY

Provides temporary /subsidy income through the K-TAP and Kinship Care programs.

## **SPENCER COUNTY CHILD SUPPORT DIVISION**

73 EAST MAIN STREET

TATLORSVILLE, 40071

502-477-6667

10URS: 8:00-4:00 MONDAY-FRIDAY

## **SOCIAL SECURITY ADMINISTRATION**

FRANKFORT {TOLL FERE} 1-800-772-1213

## **PROTECTION & PERMANENCY**

### **CENTER FOR WOMEN & CHILDREN**

630 MAIN STREET

SHELBYVILLE, KY 40065

502-633-7801 CRISIS 502-633-7800

HOURS: 9:00-5:00 MONDAY-- FRIDAY

**1-800-803-7577 - 24 HOUR CRISIS LINE**

Provides emergency shelter, transitional housing, hospital advocacy, legal advocacy, safety planning,, counseling,, casework and children's services

### **DEPARTMENT FOR COMMUNITY BASED SERVICES**

PROTECTION & PERMANENCY

73 EAST **MAIN** STREET

fAYLORSVILLE, KY 40071

502-477-8807

Provides county wide social services for child protection, foster care, day care, juvenile services and adult services.



## TRANSPORTATION

### LOGISTICARE

620 SOUTH 3RD STREET

LOUISVILLE, KY 40202

502-569-1688

1-866-251-7404

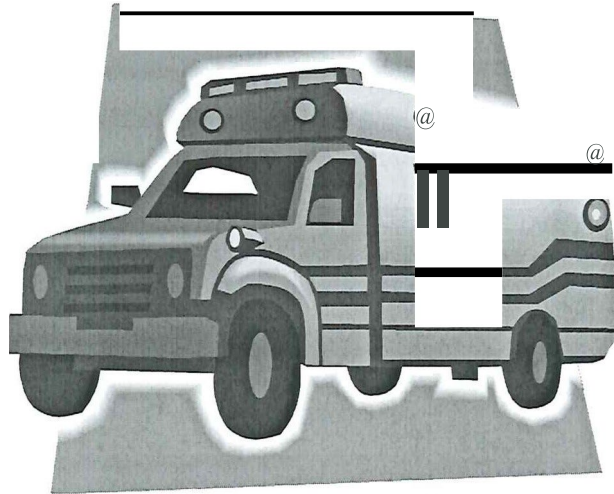
Provides medically related transportation to persons of any age that have Medicaid/Passport.

### LOUISVILLE WHEELS

**5** leave a message

Provides medically related transportation.

(56 :l) 42-0 - <IZK



## **YOUTH PROGRAMS**

### **SPENCER COUNTY PARKS DEPARTMENT**

C/O SPENCER COUNTY JUDGE EXECUTIVE

CONTACT: BRIAN SPENCER

P.O. BOX 397

TAYLORSVILLE, KY 40071

CELL 502-376-9850

SPENCER COUNTY FAMILY RESOURCE CENTER

420 HIGHVIEW DRIVE

COORDINATOR: LINDSAY CAIN

TAYLORSVILLE, KY 40071

502-477-3339

2nd LOCATION

1265 MT. WASHINGTON ROAD

,AYLORSVILLE,KY 40071

502-477-3202

### **SPENCER COUNTY YOUTH SERVICE CENTER**

520 TAYLORSVILLE ROAD

COORDINATOR: VONDA MARTIN

TAYLORSVILLE, KY 40071

502-477-3222

2nd LOCATION

1263 MT. WASHINGTON ROAD

YOUTH ADVOCATE: STEPHANIE SIMPSON

TATLORSVILLE, KY 40071

502-477-6934 EXT.2005

### **COOPERATIVE EXTENSION OFFICE**

100OAKWAY

TAYLORSVILLE, KY 40071

\_02-477-2217

HOURS: 8:00-12:00 & 1:00-4:30 MONDAY-FRIDAY

4-H CLUB and school curriculum enrichment programs are offered.

## **SPENCER COUNTY RESOURCE NUMBERS**

CIRCUIT CLERK	502-477-3220
COUNTY ATTORNEY	502-477- 3225
COUNTY CLERK	502-477-3215
COUNTY JUDGE EXECUTIVE	502-477-3205
SHERIFF	502-477-3200
CITY HALL	502-477-3235
POLICE DEPT.	502-477-3231
FIRE DEPT.	502-477-3228
EMS	502-477-3200
DEPARTMENT FOR COMMUNITY BASED SERVICES	1-855-306-8959
PUBLIC LIBRARY	502-477-8137